

# AKS 0.03 C NODC - Ground Fault Sensors

$I_{PN} = 5, 10, 30 \text{ mA}$

Combine a current transformer, signal conditioner and limit alarm into a single package. The AKS series has an extended current input range, universal solid-state outputs and a wide frequency response. The output state is Normally Open for DC output.



## Electrical data

$I_p$	Primary current (with manual jumper)	5, 10, 30	mA AC
<b>S</b>	Output signal	0.15 A @ 30 V DC	
<b>f</b>	Frequency range	50-400	Hz
$V_c$	Supply voltage (Operates 55-110% of $V_c$ )		
	<b>AKS 0.03 C NODC 120 FS</b>	120	V AC
	<b>AKS 0.03 C NODC 120 NF</b>	120	V AC
	<b>AKS 0.03 C NODC 240 FS</b>	240	V AC
	<b>AKS 0.03 C NODC 240 NF</b>	240	V AC
	Supply voltage (Operates +/-10% of $V_c$ ):		
	<b>AKS 0.03 C NODC 24U FS</b>	24	V AC/DC
	<b>AKS 0.03 C NODC 24U NF</b>	24	V AC/DC
$V_b$	Rated voltage (CAT III, PD2)	150	VAC
$V_d$	R.m.s. voltage for AC isolation test, 50 Hz, 1 mn	3	kV

## Accuracy - Dynamic performance data

$t_r$	Response time @ 105 % of $I_{p \text{ adj}}$	200	ms
	@ 150 % of $I_{p \text{ adj}}$	60	ms
	@ 600 % of $I_{p \text{ adj}}$	15	ms

## General data

$T_A$	Ambient operating temperature	- 15..+ 70	°C
<b>m</b>	Mass	140	g
	Safety	IEC 61010-1	
	EMC	EN 61326	

## Options

FS	Normally Energized: Protection from faults and loss of control power.
NF	Normally Deenergized: Protection from faults only when control power is applied

	Control power applied		
	No Power	No fault	Fault
FS	Open	Closed	Open
NF	Open	Open	Closed

## Features

- Operation to Match Your Application: Auto-Reset—For controlling shunt trip breakers.
- Tri-Set—Field select 5, 10 or 30mA. Fast and convenient.
- Compatible with Standard Equipment Works on 1 phase or 3 phase power. Controls standard shunt trip breakers or contactors. Tie into Emergency Circuits (EMO/EPO).
- Isolated Magnetically isolated from the monitored circuit and control power.

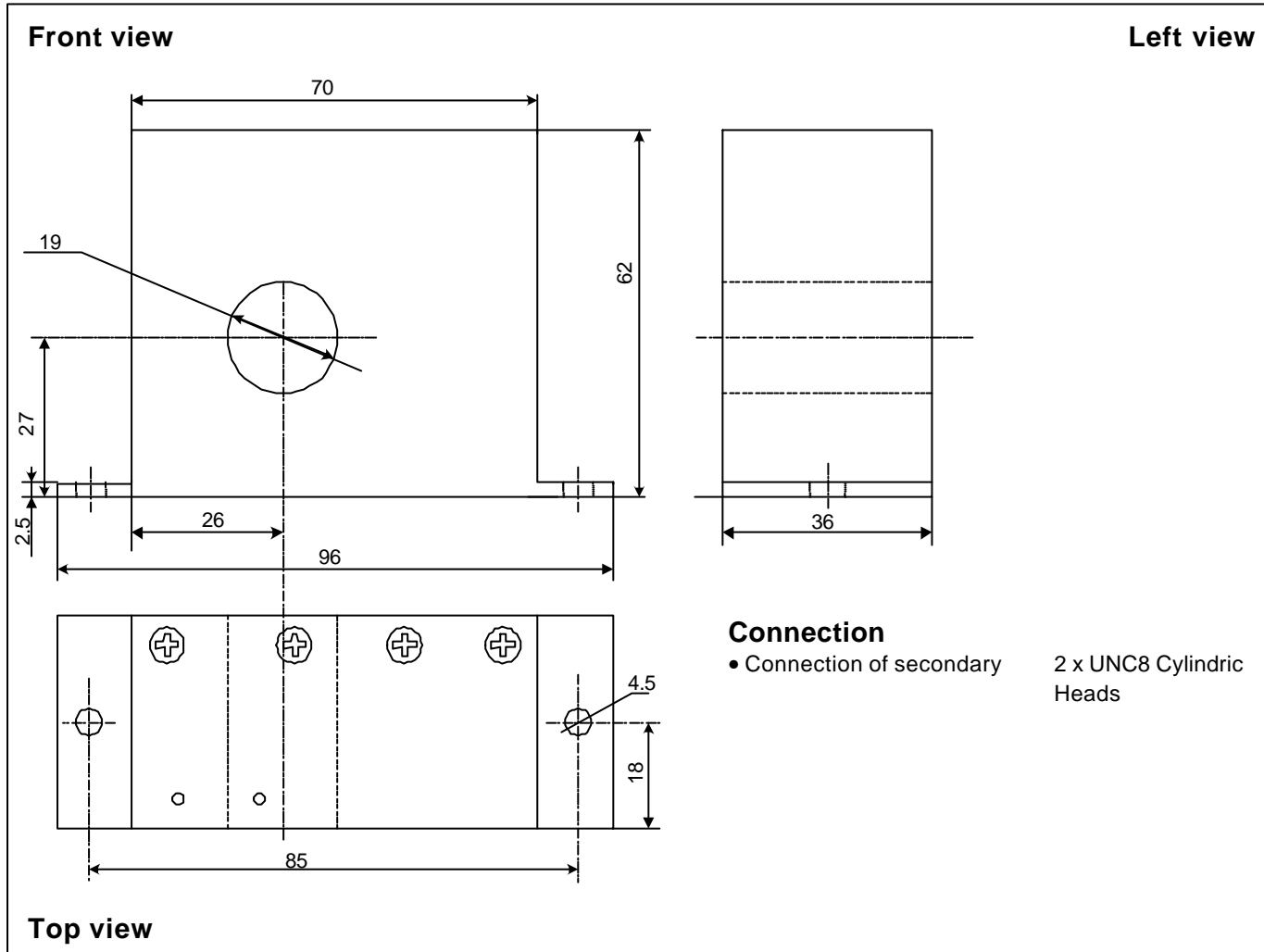
## Applications

- Personnel Protection (typically 5mA) Senses low fault currents and alarms to shut power off before injury occurs.
- Equipment Protection (typically 30mA) When personal protection is not an issue, select a higher set point to protect equipment.

$I_{p \text{ adj}}$ : Setpoint current adjusted by the user

040906/2

**Dimensions AKS 0.03 C NODC -** (in mm. 1 mm = 0.0394 inch)



**Mechanical characteristics**

- General tolerance  $\pm 1$  mm
- Fastening 2 holes  $\varnothing 4.5$  mm
- Primary through-hole  $\varnothing 19$  mm

**Remarks**

- Temperature of the primary conductor should not exceed 60°C.
- Dynamic performances (di/dt and response time) are best with a single bar completely filling the primary hole.